



# notes & news

## IN THIS EDITION

- ◆ Girl's Night - Retreat Take 2!
- ◆ LHNW Band Concert
- ◆ MOPS Trivia Night
- ◆ Thanksgiving Food Baskets
- ◆ Holiday Worship Schedule
- ◆ Church Decorating
- ◆ The Giving Tree

### 8th Grade Class Trip Fundraisers

**Nov.** Skate Night / Shield's Pizza  
Potbelly  
Simply the Best Boutique

**Dec.** Dearborn Ham Sale  
Chipotle  
Panera

## on the horizon

### December Teasers

- ◆ Advent by Candlelight
- ◆ Carols by Candlelight
- ◆ Children's Christmas Program
- ◆ LHNW Christmas Concert
- ◆ Poinsettia Sale for Christmas

## 2019 *Holiday Schedule*

Thanksgiving Eve Worship  
Wednesday, November 27, 6:30pm

Thanksgiving Day Worship  
Thursday, November 28, 10:00am

Wednesday Advent Worship  
December 4, 11, and 18  
Services at 4:00pm and 6:30pm

LHNW Christmas Concert  
December 8, 7:00pm

Carols by Candlelight  
Sunday, December 15 at 5:00pm

Children's Christmas Program  
Sunday, December 22, 11:00am

Christmas Eve Worship  
Tuesday, December 24  
4:00pm (*family service*)  
7:00pm | 10:00pm (*candlelight services*)

Christmas Day Worship  
Wednesday, December 25, 10:00am

New Year's Eve Worship  
Tuesday, December 31, 6:30pm

New Year's Day Worship  
Wednesday, January 1, 10:00am



**We join together** to worship God because of the love He has shown us in His son Jesus Christ. As we worship, we are assured of our forgiveness. By gathering we are responding to the love of God in Christ Jesus with our prayers and praise.

### Welcome Visitors!

We pray you are strengthened in your faith and relationship with Jesus Christ as you worship with us. Please fill out the “Guest” side of an attendance card located in the pew racks and pass it to the center aisle during the offering so we can get to know you better. If you wish to commune, please read our statement of faith on the laminated pew card God’s blessings on your time with us and look forward to seeing you again.




### Regular Worship Schedule

Contemporary Saturdays  
at 6:00pm

Traditional Sundays  
at 8:30am and 11:00am

Bible Education Hour  
Sundays 9:45- 10:45am

[www.ourshepherd.net](http://www.ourshepherd.net)

-  [ourshepherdlutheranchurch](https://www.facebook.com/ourshepherdlutheranchurch)
-  [@ourshepherdlcms](https://twitter.com/ourshepherdlcms)
-  [@ourshepherd](https://www.instagram.com/ourshepherd)

### From the Treasurer

Contributions Needed  
**OCTOBER \$ 107,311**

Date	Envelope & Plate
Oct 6	\$ 17,405
Oct 13	\$ 31,699
Oct 20	\$ 11,971
Oct 27	\$ 28,391
<b>TOTAL</b>	<b>\$ 89,466</b>

### Where to Find Information

The Notes and News monthly newsletter will be distributed the first weekend of each month. The newsletter will be available online throughout the month, also at the Welcome Center or under the “Gather, Nurture, Serve” sign on the slat wall outside the Sanctuary doors. This area is our Information Center. You will find our prayer bulletin, a listing of monthly birthdays and baptism birthdays, a calendar of events and more! We encourage you to visit the Information Center every week.

### Notes & News Deadlines

Articles due on or before the 25th of each month. **NO CLASSIFIED ADS PLEASE.**

Email: [publications@ourshepherd.net](mailto:publications@ourshepherd.net)  
Text: 248-672-8248

Articles are subject to editing.  
*Katie Priskorn, Editor*



## ATTENDANCE

### Church Attendance

Oct 5 - 6:00pm ..... 116  
Oct 6 - 8:30am ..... 169  
Oct 6 - 11:00am ..... 200  
*Weekend Total* ..... 485

Oct 12 - 6:00pm ..... 88  
Oct 13 - 8:30am ..... 221  
Oct 13 - 11:00am ..... 180  
*Weekend Total* ..... 489

Oct 19 - 6:00pm ..... 94  
Oct 20 - 8:30am ..... 156  
Oct 20 - 11:00am ..... 210  
*Weekend Total* ..... 460

Oct 26 - 6:00pm ..... 75  
Oct 27 - 8:30am ..... 218  
Oct 27 - 11:00am ..... 211  
*Weekend Total* ..... 504

### Giving made easy

Text “give” to 248-430-4403

Kindrid | Give.Church makes it easy to schedule regular donations. Click on “Give” at [ourshepherd.net](http://ourshepherd.net), or text “give” to our dedicated giving number (above). It’s easy to change your gift and giving dates at any time.

## ALTAR FLOWERS

NOVEMBER 3

*In Honor of  
Linda and Scott's birthdays*

*In Memory of June Aird  
By May Aird*

NOVEMBER 10

*In Memory of Brenden Isabell  
By his family*

NOVEMBER 17

*In Honor of  
Dave and Judy Bieber's Anniversary  
By Dawn and Jeff Bieber*

## REMEMBRANCE

*In loving memory of Leonard Sheffer  
who passed away November 5, 2017.*

*It is hard to believe you have been  
gone two years already. You were a  
wonderful husband, best friend, father  
and grandfather. We ALL love and  
miss you so very much every day.*

*Your loving wife, Arline, and daughters  
Janet and Kellee and families*

## Girls' NIGHT

*Women's Retreat "Take Two"!*

WHEN: FRIDAY, NOVEMBER 8th  
7:00pm

WHERE: OUR SHEPHERD LOWER LEVEL

*Information flyers available in the Atrium!*

## THE BOOKSTORE



*Great gift ideas!*

Christmas Cards on sale this month!

Bookstore Hours:

Mon-Fri 9:00am-4:00pm

Sunday, November 10, 9:30-11:30am

Sunday, November 17, 9:30-11:30am

## Christmas Gift Wrapping

Wrapping a mountain of gifts? Who has time! Let us help! ☺ Bring your gifts to church the week of December 16th. Our wrapping stations will be open Monday through Friday from 9:00am-3:00pm.

Proceeds go to Women's Ministry  
Sisterly Love Fund.

Order forms will be available at the Welcome Center and Women's Ministry slat wall starting in December. Our elves will beautifully wrap presents for a nominal fee, and it's worth every penny!







# OLDER WISER LUTHERANS Outing



## The Heart of Family

**Sunday Mornings - Church Library  
9:45am – 10:45am  
Beginning November 17, 2019**

This study is for you if you want to 1) Enrich your marriage, 2) Invest in your family, and 3) Change the world. *The Heart of Family* is a video study series featuring Kirk and Chelsea Cameron. The Camerons share what they have learned in over 25 years of marriage and parenting. The sessions are solid, biblically-based, and faith-filled.

**Time and Place:** *The Heart of Family* will meet in the Our Shepherd Lutheran Church Library for six weeks during the 9:45am Bible Study Hour. Dr. Mark Nimtz, Director of Spiritual Education and Service will anchor the facilitation of the presentation and discussion beginning November 17. Have your children attend Kids of the Rock ad joins us for six weeks!

**Suggested Readings:** *Lutheran Study Bible*

DATE	SESSION	LESSON
November 17, 2019	Session 1	What is Marriage?
November 24, 2019	Session 2	Resolving Conflict
November 1, 2019	Session 3	Forgiveness and Joy
December 8, 2019	Session 4	Godly Parenting (Part 1)
December 15, 2019	Session 5	Godly Parenting (Part 2)
December 22, 2019	Session 6	Disciplining Your Kids

For more information contact Dr. Mark Nimtz at 248-646-6100.

## DETROIT PARADE COMPANY TOUR & LUNCH AT THE POLISH VILLAGE CAFE

- Who: All Seniors and friends!
- What: Lunch at the Polish Village Cafe & Detroit Parade Company Tour
- When: Tuesday, November 18, 2019
- Time: Meet in the OSL Library at 11:00am  
Lunch @ 12:00pm  
Tour the Parade Company @ 1:30pm
- Cost: \$10 for the Tour (Bring Lunch Money)

### See the Parade in a Whole New Way!

You are invited to take a behind the scenes look and discover Detroit's most hidden treasure at The Parade Company studio. Step into a story land of color and fun as we get ready for one of Detroit's most anticipated holiday events, America's Thanksgiving Day Parade!

Wander through a wonderland of fantasy and floats. See the Costume Dept where characters come to life. Meet award winning artisans who bring the magic to you! Hansel & Gretel, Mother Goose, Humpty Dumpty, the Grinch, and of course, Clownie! Join us on an awesome adventure that is unique to Detroit and fun for all!

Register in the narthex or contact Mark at 646-6100 for more information!

**Congregational Campouts 2020**  
"Blessed are you . . . Rejoice and be glad."  
Matthew 5:3-10



## 2020 OSLC Campout and Retreat Schedule

"Blessed are you . . . Rejoice and be glad."  
Matthew 5:3 - 10



Dates	Campground/Venue	City	Special Information
March 20 - 22, 2020	Our Shepherd Men's Retreat	Adrian, MI	Contact Mark Nimtz for more info
June 5 - 7, 2020	Lakeport State Park	Lakeport, MI	Sites #9-35; 143-193 (or best available site)
July 30 - August 2, 2020	Pokagon State Park	Angola, IN	Campground # 3 Sites #300 - 306; and the strip of sites through the middle of Campground #3 - Please refer to the website <a href="http://camp.IN.gov">camp.IN.gov</a> or brochure map.
September 11 - 13, 2020	LLL Men's Retreat at Camp Arcadia	Arcadia, MI	Contact Camp Arcadia ( <a href="http://camp-arcadia.com">camp-arcadia.com</a> )
September 25 - 27, 2020	Metamora Hadley State Park (Celebrating 20 Years of Camping Ministry!)	Metamora, MI	Any Site in North Campground (campground near camp store)

The devotional theme is based on Matthew 5:3 - "Blessed are you . . . Rejoice and be glad."

**Who:** Campouts and Retreats for Everyone! Men, Women, Young Adults, Singles, Families, Couples!

**What:** Congregational Campouts and Retreats for All!

Highlights include . . .

- . . . Campgrounds include lakeside settings w/ modern sites, electrical hook-ups, and showers
- . . . Campgrounds offer mini-cabins for those without a tent or RV
- . . . Spiritual emphasis at every campout and retreat event
- . . . Retreats offer clean and updated lodging at conference centers or hotels
- . . . Saturday or Sunday Outdoor Worship
- . . . Great Bible studies, fellowship, music, food, recreation!

Revised October 30, 2019

# Sunday School

We welcome children ages 3 through Grade 6 and any adults who love to work with children. We gather in the Lower Level every Sunday morning at 9:45am.

Our current rotation is "The Life of Nehemiah". Join our Campfire Openings with music led by Alex Wilson. We thank our teachers Jessica Merz, Sue Barbe, Mat & Julia Alder, Linda Fairo, and Lizzie Nimtze who leads our littlest lambs (age 3-PreK) in learning more about their Lord. Come join the FUN! Questions, please contact Kim Kern, Director of Children's Ministry (kernk@ourshepherd.net).



Sunday, December 22, 11:00am

Practices will be Saturdays December 7, 14, & 21 from 9:00am to Noon. Registration forms will be available at the Welcome Center toward the end of the month.

The poster has a teal background with orange and yellow autumn leaves in the top right corner. The word "Trivia" is written in a large, white, cursive font at the top. Below it, in a white box, is the text "IT'S THAT TIME AGAIN...". Another white box below that says "JOIN OSL MOPS FOR". The word "Night" is written in a large, white, cursive font. In the bottom left, "BYOB" is written in a blue, blocky font, with "\$150 for a six person table" and "Snacks for purchase" written below it in a smaller, white font. In the bottom right, a white box contains "FRIDAY NOVEMBER 15TH". Below that, another white box says "OUR SHEPHERD LUTHERAN CHURCH THE LOWER LEVEL". At the very bottom, a white box contains "DINNER 7-8PM" and "TRIVIA 8-10".



Work on this year's Giving Tree has been going on for several months. The tree will be decorated and waiting for you by November 9. Please select a tag, purchase the gift listed, and follow the directions on the back of the tag. Red tags are for women, green for men, white for girls, brown for boys, and yellow for families. There will also be blue tags for Wellspring.

As in past years, most of the gift cards requested can be purchased through the SCRIP program, and are available in the bookstore (or outside the bookstore on Sundays when the bookstore is not open). Profits from these cards will go to Carol's Cupboard. Items purchased for the Giving Tree must be returned to the church by WEDNESDAY, DECEMBER 4. If you are unable to purchase the gift selected, please return the tag to the tree. If you would like to adopt a family or a member of one of our families, please notify Vicki Schram by November 7, or as soon as possible. If you have any questions or would like to assist with the Giving Tree ministry, please contact Vicki Schram at 248-891-1673. Thank you!!

LHNW  
Concert Band  
Sunday,  
November 10  
4:00pm

Please join us as the Concert Band wraps up a four-day, three-state tour with a performance in our sanctuary. Hear our students give glory to God through their musical gifts! A free-will offering will be taken.

Join Us!





## We tell people

about Jesus both through words and actions. As our relationship with Jesus grows, our lives overflow with His love as we serve others. Our service to our community finds its source in God's amazing grace.



## FAMILY OF GOD

[www.fogdetroit.com](http://www.fogdetroit.com)

Our ministry to feed the community at Family of God Lutheran Church:

Thanks to all volunteers serving in past and future events! OS will provide another meal at Family of God (FoG) Tuesday, November 19. Needed: Helpers for food prep at 2:30pm in the OS kitchen; drivers and others to go to Family of God at 5pm to serve, and mingle. Dinner begins promptly at 6:15pm; volunteers to come back to OS at 7:30pm and help with clean up.

Future opportunity to serve meals at FoG:  
Tuesday, December 17

Contact Terry Hynes for details:  
[thynes2537@sbcglobal.net](mailto:thynes2537@sbcglobal.net) or 248-631-8369



## Our Shepherd Carol's Cupboard

Carol's Cupboard Food Bank continues to support needy families during the holidays. We provide food baskets for Thanksgiving, Christmas and Easter holidays. We are currently in need of:

- Cereal/Oatmeal
- Canned Fruits and Vegetables
- Canned Tuna/Chicken
- Soups (beef, chicken, vegetable)
- Canned Chili, Hash, Stew, Pasta
- Rice-a-Roni or Noodle Roni
- Peanut Butter
- Pasta/Pasta sauce
- Laundry Soap/Fabric Softener
- Dish Soap
- Toilet Paper or Paper Towels
- Paper grocery bags (special need)

## Thanksgiving Baskets YOUR HELP NEEDED

Saturday, November 16, 9:00-10:30am

We are packing and distributing food baskets as a one-day event. Please consider signing up to assist with any of the following:

- Packing at 9:00am in Church Gym
- Distribution at 10:00am
- Clean up - Put away food, tables/chairs 10:00am
- Delivering baskets to recipients and St. Paul in Pontiac.

Other opportunities to help with holiday baskets are Saturday December 14, 2019 (Christmas) and Saturday April 4, 2020 (Easter). Thanks for your continued prayers and support.

To volunteer, please email Mike Earl  
[mrearl73@aol.com](mailto:mrearl73@aol.com), or call (248) 376-8046

**LWML**  
Lutheran Women in Mission

The Mighty Mite Box!

Deposit mites the first full weekend of each month!

Find our Mission Mite box on the back table in the Sanctuary.

Total Mites collected in October is \$179.98. Thank you for meeting the challenge to support at a slightly larger amount, helping us meet our promises to support our selected missions! The MITES COLLECTION BOX is just inside the Sanctuary the first weekend of each month. Blessings to you for having a giving heart!

## Dearborn Ham Sale

Starting in mid-November we are having our annual Dearborn ham sale that will continue through December 6th. Order forms will be delivered to your church mailbox

or you can place an order with one of our 8th graders who will be selling them before and after church services from November 16 to December 1. Just in time for Christmas, all orders will be available for pick-up at the school campus on Thursday, December 19th from 3:00-5:00pm.



# PUT THE FUN IN FUNDRAISER

## 8TH GRADE CLASS TRIP to Washington DC



Below are opportunities for you to help the 8th graders raise funds for their class trip.

### NOVEMBER . . .

Friday, November 15  
Skate Night and Shield's Pizza (on Maple and Crooks)

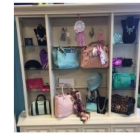
Tuesday, November 19  
Potbelly's - Go grab a bite to eat between 5:00-8:00pm.  
31991 Woodward Ave, Royal Oak, MI 48073  
Tell them you are from OSL School!

Wednesday, November 20  
Simply the Best Boutique, 331 S. Main Street, Rochester.  
Shop between 7:00-9:00pm! Flyer available on slatwall.



*Simply the Best Boutique*  
331 S. Main Street  
Rochester

Wednesday, Nov. 20, 2019  
7 PM to 9 PM



### DECEMBER . . .

Wednesday, December 4  
Chipotle - 4:00-8:00pm - Stop by before/after Advent Services  
32824 Woodward Ave, Royal Oak, MI 48073  
BRING THE FLYER (on slatwall in December)

Wednesday, December 11  
Panera Bread - 4:00-8:00pm - Stop by before/after Advent Services  
1325 Coolidge Hwy, Troy, MI 48084  
BRING THE FLYER (on slatwall in December)

Friday, December 13  
Santa Shop and Cookie Walk at the School

# DO GOOD WITH BURRITOS



Join us at our restaurant for a fundraiser to support Our Shepherd Lutheran 8th Grade Washington D.C. trip. Just come in to the Chipotle at **32824 Woodward Ave** in Royal Oak on **Wednesday, December 4th** from **4:00pm to 8:00pm**. Bring in this flyer, show it on your smartphone or tell the cashier you're supporting the cause to make sure that 33% of the proceeds will be donated to Our Shepherd Lutheran 8th Grade Washington D.C. trip.

CHIPOTLE  
Online orders will not be included in the fundraiser total. To ensure your purchase is counted in the fundraiser, be sure to order and pay in-restaurant. Gift-card purchases during Fundraising do not count towards total donated sales, but purchases made with an existing gift card will count.



## OUR SHEPHERD LUTHERAN

WHERE 1325 Coolidge Highway, Troy, MI 48084

WHEN Wed, Dec 11th

FROM 4:00pm - 8:00pm

Bring this flyer or show an electronic version to the cashier when you place your order and ~~ask~~ donate a portion of the proceeds from your purchase.



### “Regiftables” for Santa Shop

The 8th graders are doing a “Santa Shop” fundraiser. Students at school will have a chance to bring in money and shop with the help of an 8th grader. We need donations of new items students may purchase that are small enough for them to carry home. Examples : small toys, towels, flashlights, lotion, stationary, pens. Drop off items in the church and school offices. Questions contact: Jessica Merz [crosseyed@juno.com](mailto:crosseyed@juno.com).

# What's coming up DECEMBER



## Advent by Candlelight

Tuesday, December 10th  
6:00-8:00pm, Church Lower Level



Advent by Candlelight is an opportunity for women to set aside the craziness of holiday preparations and focus their hearts on the birth of Christ. Decorations and fellowship provide a delightful atmosphere for ladies to enjoy dessert, music, and a short program by candlelight. Contact information is below if you would like to host a table or have any questions.

Missy Macavage and Janet McLoughlin  
macavagem@ourshepherd.net  
mclough3@ourshepherd.net

“Lutheran Woman of the Year” is announced at Advent by Candlelight. Find Nomination forms on the central Information slatwall. Form are due to Katie Priskorn in the church office by December 1st.



## Christmas Concert

Our Shepherd's 69th Annual  
“Carols by Candlelight”

Sunday, December 15th at 5:00pm

Featuring our adult choirs, school choirs,  
and our very own carol's orchestra! Join  
us for this beautiful tradition of music.

Admission is free.

**CHURCH DECORATING** is Saturday November 30th after the Saturday  
Worship Service (7:15pm). Come join in getting our sanctuary ready for CHRISTmas!

### Lutheran Witness

LW is the official periodical the LCMS. The subscription year is March 2020 through February 2021. Subscriptions are \$11.60 if you go through the church office. Deadline (not to exceed) is December 15.



### Christmas Poinsettias

As always, the selections are red pink, or white (2 plants per pot) Cost is \$14.00. Deadline (not to exceed) is December 20. Information is all on the order form.

***Lutheran Witness and Christmas Poinsettia Forms  
located on the Information Slatwall.***

Our Shepherd  
Lutheran  
CHURCH-SCHOOL-CHILD CARE



#### Church

(248) 646-6100  
2225 E. 14 Mile, Birmingham  
churchoffice@ourshepherd.net

#### School

(248) 645-0551  
1658 Lincoln, Birmingham  
schooloffice@ourshepherd.net

#### Child Care Center

(248) 645-5273  
Church and School Locations  
earlychildcare@ourshepherd.net